

Chestnut Place

NW Corner of 15th & Chestnut

Broker Incentive*

***LEASE ANY SPACE IN THE BUILDING AND EARN 5% COMMISSION**



At the northwest corner of 15th & Chestnut Streets, Chestnut Place is situated in the heart of Philadelphia and is just steps from City Hall and the Criminal Justice Center.

Building amenities include:

- Tenant Conference Center
- Recently Renovated Lobby

Nearby transportation includes:

- 1 block to Septa's Regional Rail
- 3 blocks to PATCO Highspeed Line
- 1 block to Broad Street Line

Abundant parking is within a one block radius of Chestnut Place.

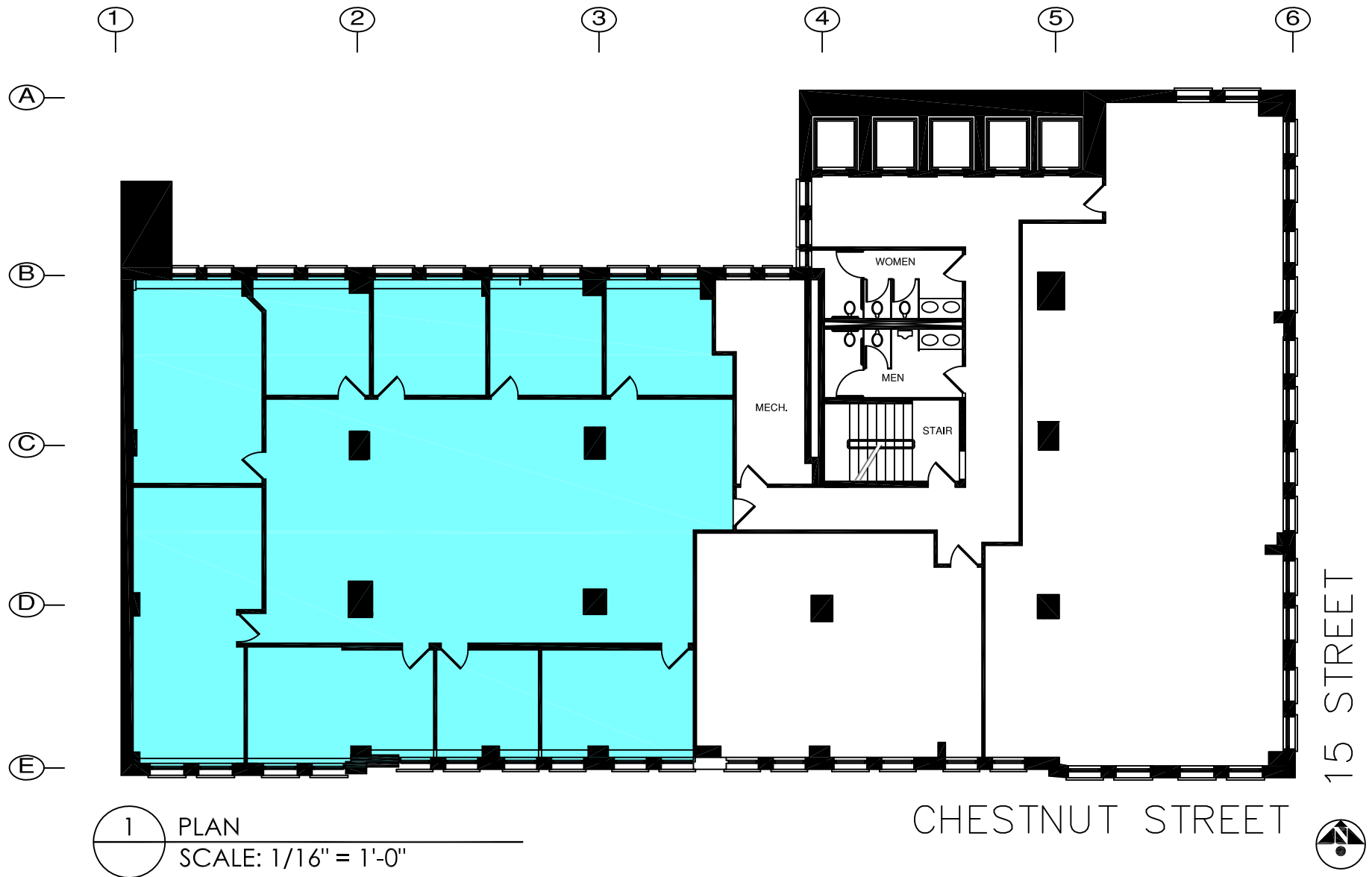
Availabilities:

- **6th floor: 4,789 RSF**
perimeter offices and large open bull pen in the center
- **8th floor: 1,444 RSF**
one office, the rest is open space
- **8th floor: 4,146 RSF**
perimeter offices with upgrades, perfect for professional company
- **11th floor: 1,367 RSF**
- **13th floor: 611 RSF**
two offices and a reception area

For more information, or to schedule an inspection, contact:

Judy Simon
(215) 825-1503
jsimon@sshco.com





1 PLAN
 SCALE: 1/16" = 1'-0"



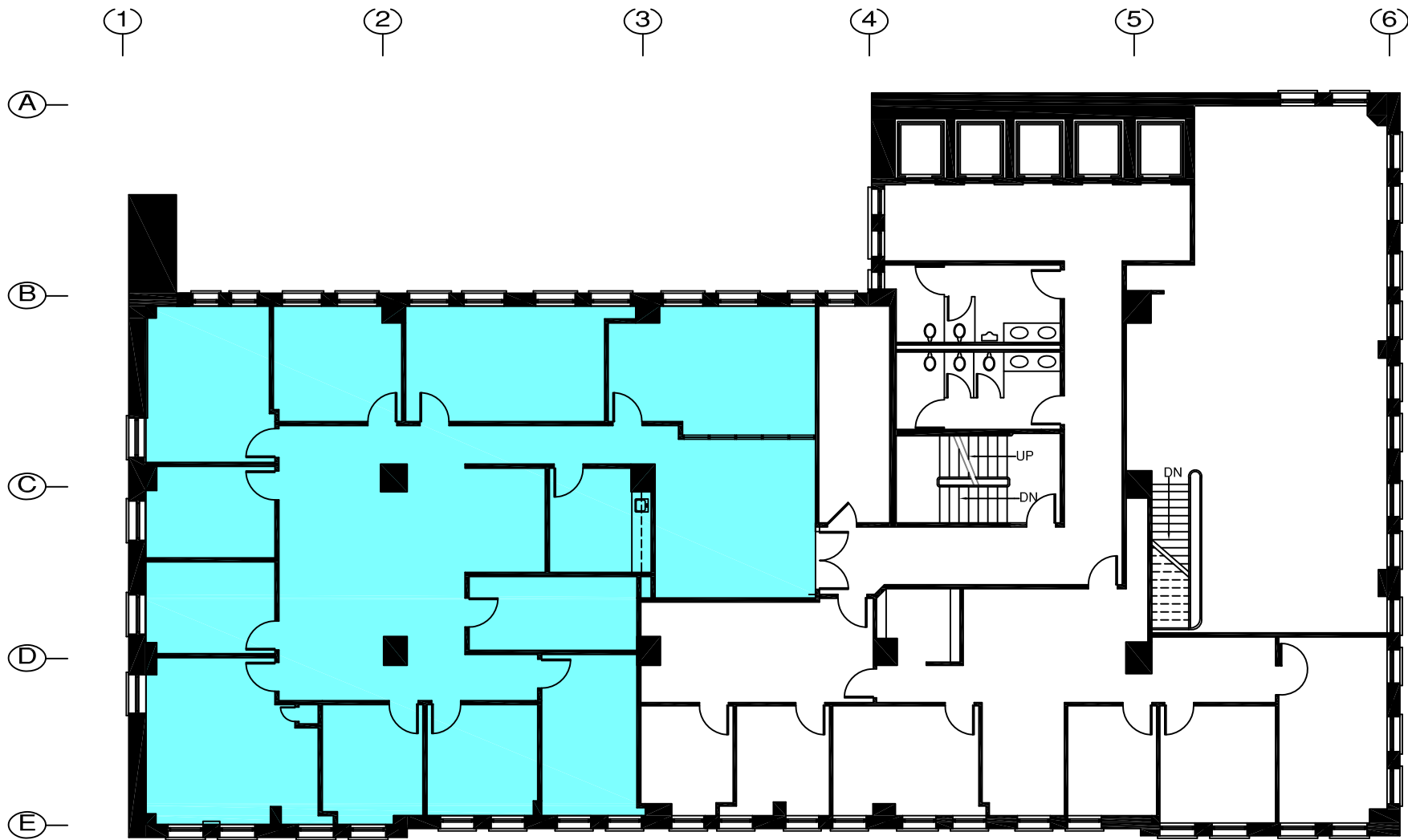
123 SOUTH BROAD STREET
 8th Floor
 PHILADELPHIA PA 19109
 Judy Simon
 C: 215-479-2100
 D: 215-825-1503
 jsimon@sshco.com

Project:
Chestnut Place
Suite 600
Philadelphia PA

Date:	1-8-10
Revision Issue.:	--
Drawn By:	KLP
Drawing Number:	

Record Conditions Plan

RC-1



1 PLAN
SCALE: 1/16" = 1'-0"



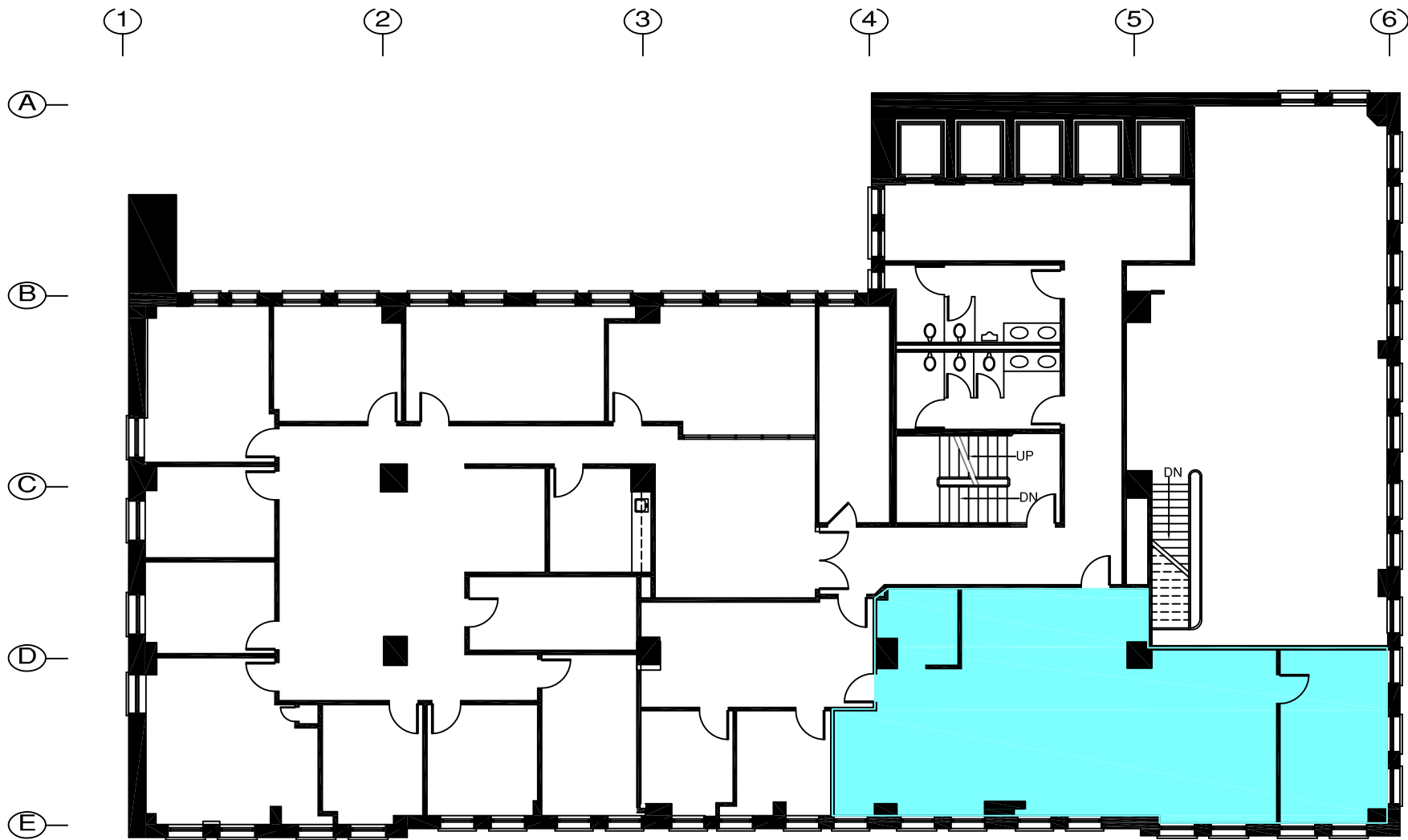
123 SOUTH BROAD STREET
8th Floor
PHILADELPHIA PA 19109
Judy Simon
C: 215-479-2100
D: 215-825-1503
jsimon@sshco.com

Project:
**Chestnut Place
Suite 800
Philadelphia PA**

Date: 1-8-10
Revision Issue.: --
Drawn By: KLP
Drawing Number:

Record Conditions Plan

RC-1



1 PLAN
SCALE: 1/16" = 1'-0"



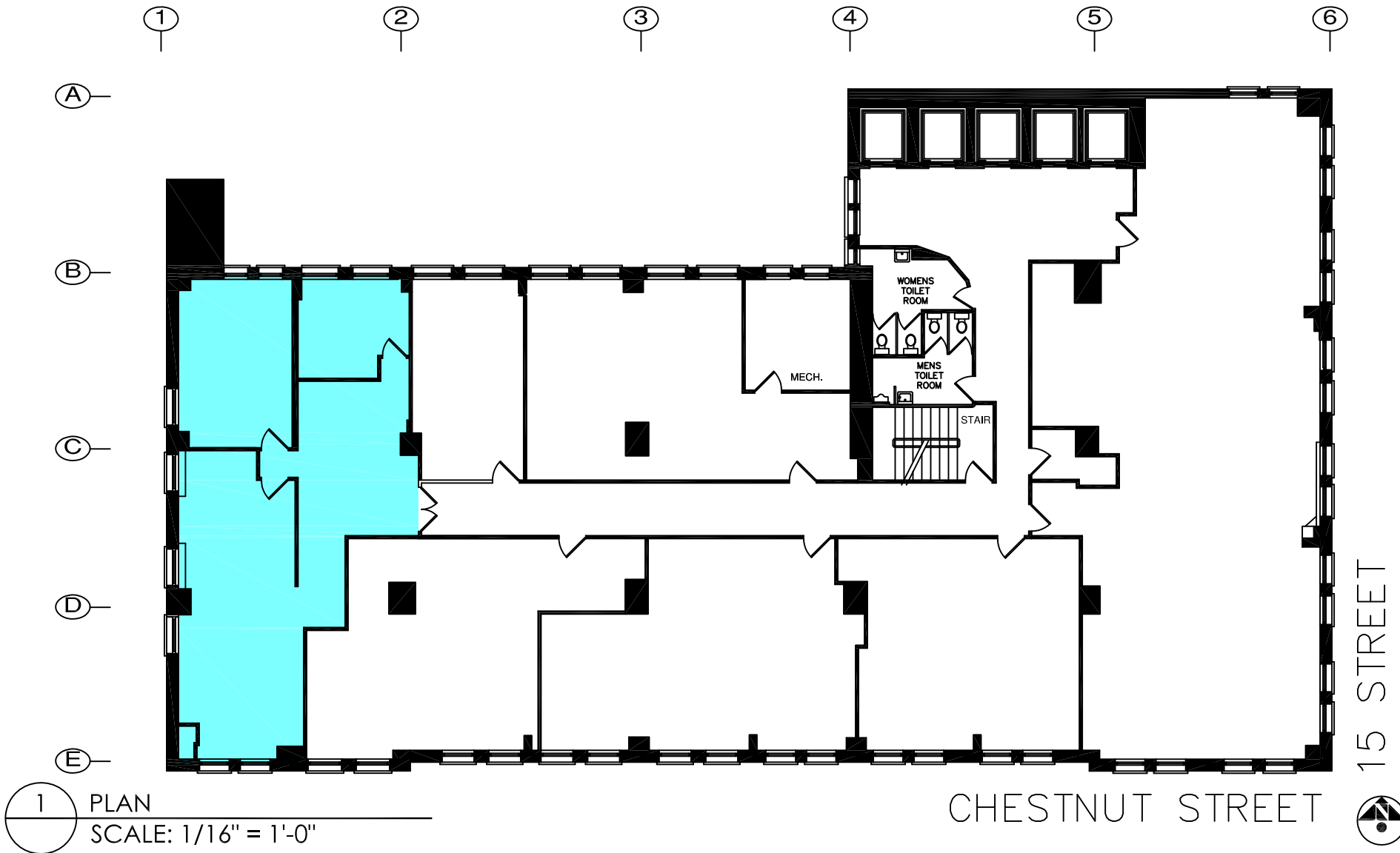
123 SOUTH BROAD STREET
8th Floor
PHILADELPHIA PA 19109
Judy Simon
C: 215-479-2100
D: 215-825-1503
jsimon@sshco.com

Project:
Chestnut Place
Suite 810
Philadelphia PA

Date: 1-8-10
Revision Issue.: --
Drawn By: KLP
Drawing Number:

Record Conditions Plan

RC-1



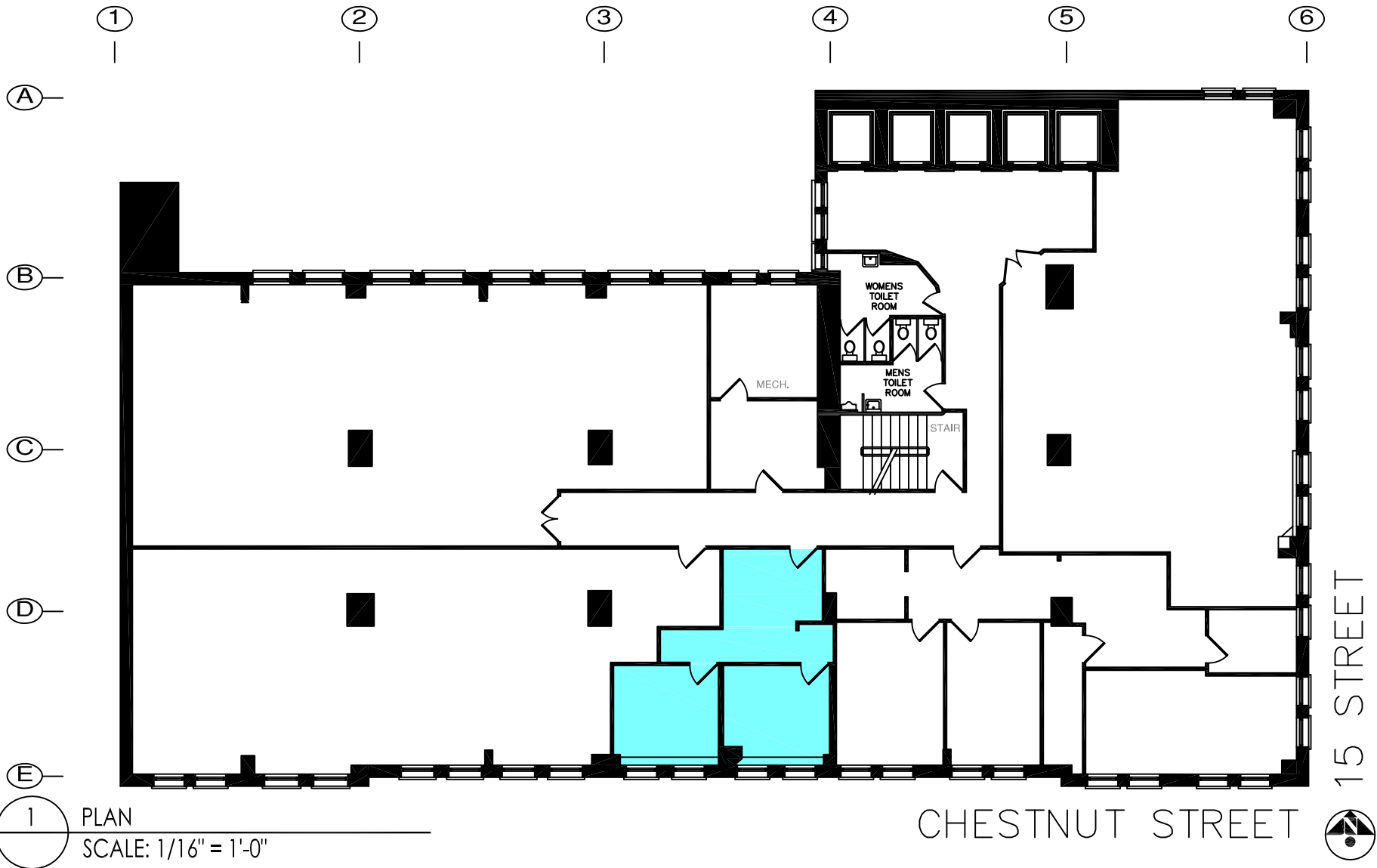
123 SOUTH BROAD STREET
8th Floor
PHILADELPHIA PA 19109
Judy Simon
C: 215-479-2100
D: 215-825-1503
jsimon@sshco.com

Project:
Chestnut Place
Suite 1150
Philadelphia PA

Date: 2-4-10
Revision Issue.: --
Drawn By: KLP
Drawing Number:

Area Plan

Area - 1150



1 PLAN
 SCALE: 1/16" = 1'-0"



123 SOUTH BROAD STREET
 8th Floor
 PHILADELPHIA PA 19109
 Judy Simon
 C: 215-479-2100
 D: 215-825-1503
 jsimon@sshco.com

Project:
Chestnut Place
Suite 1310
Philadelphia PA

Date:	1-14-10
Revision Issue.:	--
Drawn By:	KLP
Drawing Number:	

Record Conditions Plan

RC-1