



1600 MANOR DRIVE. Chalfont, Pennsylvania

- 50,000 SF, Class A Office building located in a 62-acre corporate campus
- Adjacent to New Britain Village Square Shopping Center, a 130,000 SF shopping center
- 232 apartments to be developed within New Britain Corporate Center in 2013
- Close proximity to Philadelphia Sports Club and Chesterbrook Academy and La Petite Academy, two daycare facilities
- Less than 1/4 mile from the intersection of Route 202 and County Line Road
- Immediate access to Routes 202 and 309
- Route 202 Bypass (South) work is underway, which will connect Routes 309 and 611 (Doylestown) and provide convenient access to 1600 Manor Drive two blocks away
- 7 miles to Doylestown, the county seat of Bucks County, and less than 10 miles to Horsham
- Route 202 Bypass and the widening of County Line Road to be completed in 2012





Second Floor Overlooking Lobby



Patio

Availabilities

Second Floor
4,818 SF suite (move-in condition)

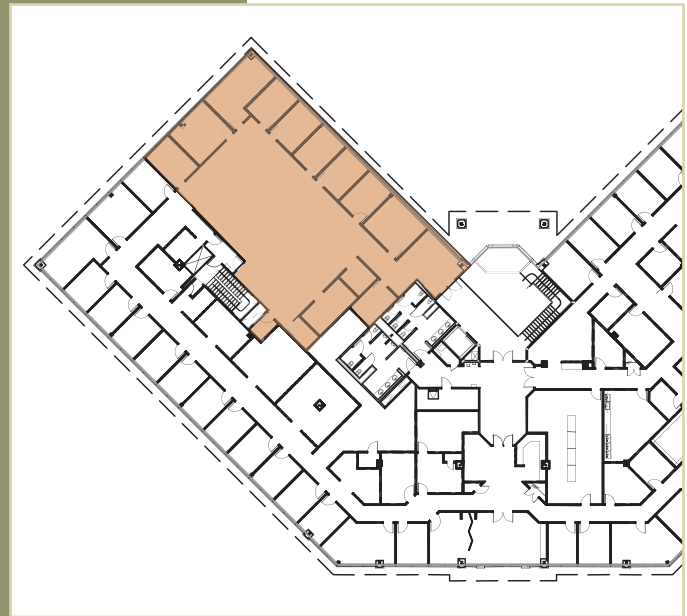
Professionally finished office building
with upgraded finishes

Fully engineered HVAC

Ample surface parking

Responsive owner managed property
management

Online management services



Second Floor

FOR MORE INFORMATION PLEASE CONTACT:



SSH Real Estate
Vision. Expertise. Results.

Two Radnor Corporate Center
100 Matsonford Road, Suite 107
Radnor, PA 19087

Doug Newbert dnewbert@sshco.com
(610) 995-1010

www.newbritaincorporatecenter.com



Owned by an affiliate of
Properties, Ltd.

www.bpgltd.com
3200 Centre Square West
1500 Market Street
Philadelphia, PA 19102