



## 311 New Rodgers Road

**311 New Rodgers Road** | Available for Lease  
I-95 Technology Center, Levittown, PA

### Property highlights

- 90,371 SF Office Building
- 42,666 SF available, divisible
- Renovated in 2002
- 12' ceiling height
- Parking ratio in excess of 5/1000
- I-95 visibility and signage opportunity
- Building and monument signage available
- All suites have private entrances
- Adjacent to I-95 at Rt. 413 (exit 44)
- Public transportation within walking distance
- Minutes from restaurants, shopping, hotels



The Buccini/Pollin Group

OWNER • BUILDER • MANAGER

[bpgroup.net](http://bpgroup.net) | [877.bp.group](http://877.bp.group)

**For more information please contact:**

**Doug Newbert**

610.995.1010 ext. 100  
[dnewbert@sshco.com](mailto:dnewbert@sshco.com)

**John Susanin**

610.995.1010 ext. 101  
[jsusanin@sshco.com](mailto:jsusanin@sshco.com)



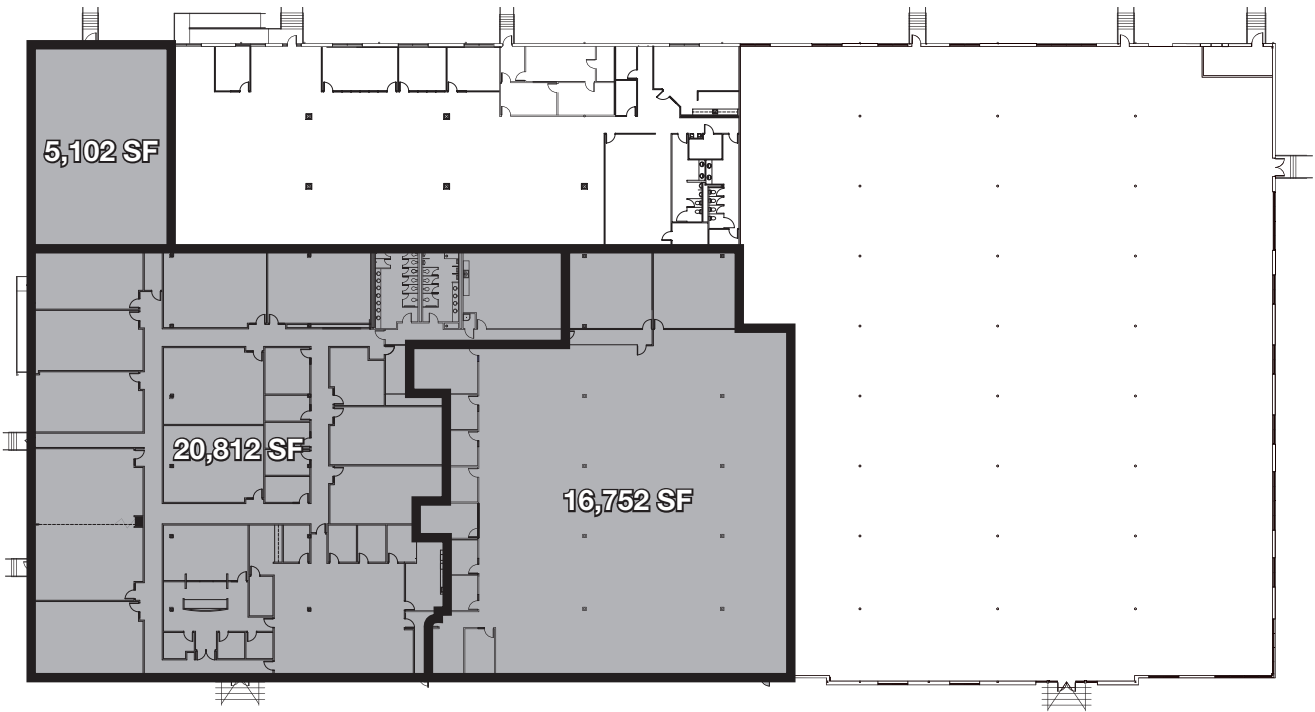
**SSH Real Estate**  
A SELIGSOHN SOENS HESS COMPANY



# 311 New Rodgers Road

**311 New Rodgers Road** | Available for Lease  
I-95 Technology Center, Levittown, PA

Available for Lease **42,666 SF**



Floor Plan

Location



The Buccini/Pollin Group

OWNER • BUILDER • MANAGER

[bpgroup.net](http://bpgroup.net) | [877.bp.group](http://877.bp.group)