

*available for lease*

**123 South Broad now has small suites for quick occupancy.** Several suites face Broad Street and some are in move-in condition.

123 South Broad's flexible floor plate can accommodate small tenants and offers a tremendous window ratio, abundant natural light and spectacular views. The building also has direct concourse access to the Broad Street Line with underground access to the entire SEPTA regional and subway train system.



## Beautiful "Small Suites"

### "Small Suite" Availabilities

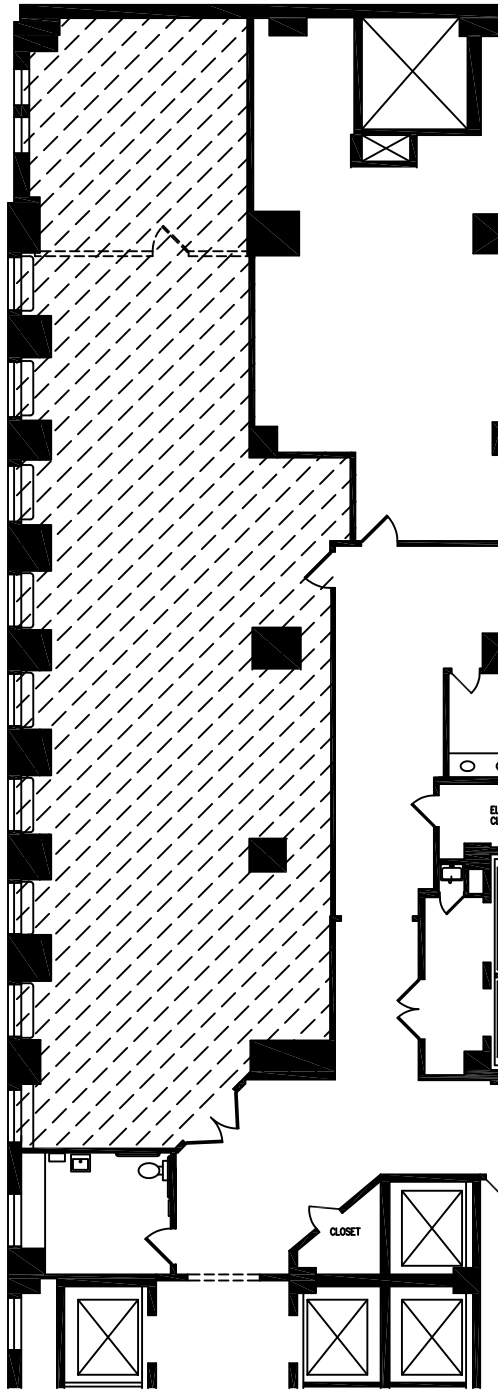
Suite	RSF	Description
815	2,768	brand new double glass door entry on elevator lobby, wide open space with ceiling and lights
1140	2,342	vacant, shell condition, high and open ceiling
1255	2,018	vacant, shell condition
1635	1,225	wide open space, shell condition, three windows facing Broad Street
1835	1,330	faces Broad Street, large reception area with three offices, high ceilings and great floor
2135	1,232	double door entry, large open area, two offices, great views and storage area

For more information or to schedule an inspection, contact:

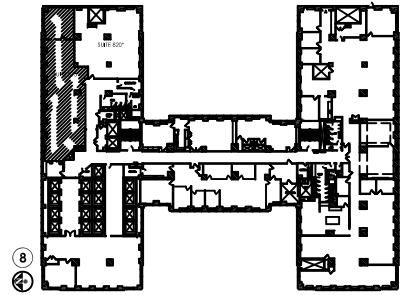
**Michael D. Kennedy**  
(215) 825-1514  
mkennedy@sshco.com

**Brennan Votel**  
(267) 546-1561  
bvotel@sshco.com





1 PLAN  
SCALE: 1/16" = 1'-0"



2 KEY PLAN



123 SOUTH BROAD STREET 8th Floor  
PHILADELPHIA PA 19102  
C: 215-219-5155 F: 215-893-1466  
kloveland@sshco.com

Project:

**123 South Broad St.  
Suite 815  
Philadelphia PA**

Drawing Title:

**Record Conditions  
Plan**

Date: 9-16-09

Revision Issue: --

Drawn By: KLP

Drawing Number:

**RC-815**

# T&Co.

TACKETT AND COMPANY, INC

ARCHITECTURE AND DESIGN

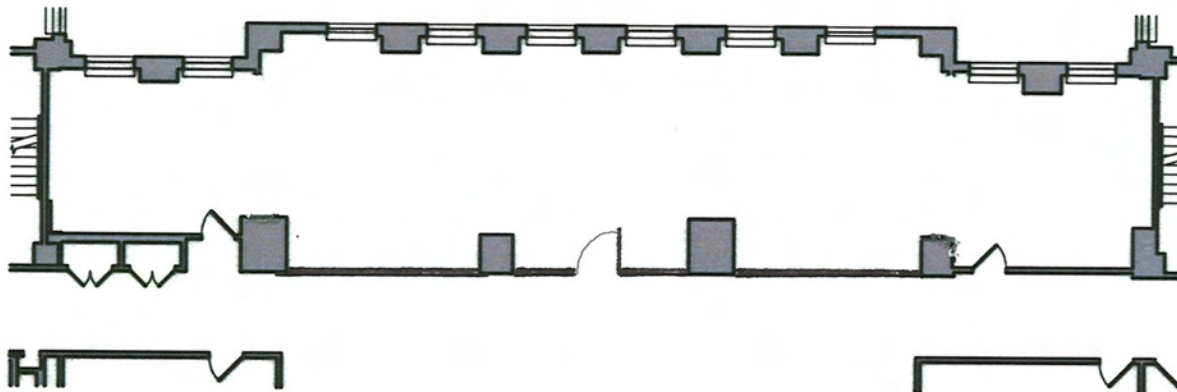
1429 WALNUT STREET, 2nd Floor  
PHILADELPHIA, PA 19102

TEL: 215-557-9540  
FAX: 267-200-0394  
design@tackettcompany.com

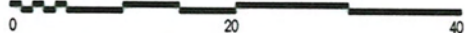
Project:

**123 South Broad  
Street**

Philadelphia, PA



GRAPHIC SCALE (1/16" = 1'-0")



Drawing Title:

**Suite 1140 Record  
Conditions**

**11th Floor 2,342 RSF**

Date: 06-18-08

T&Co. Project No.: 2008 013.01

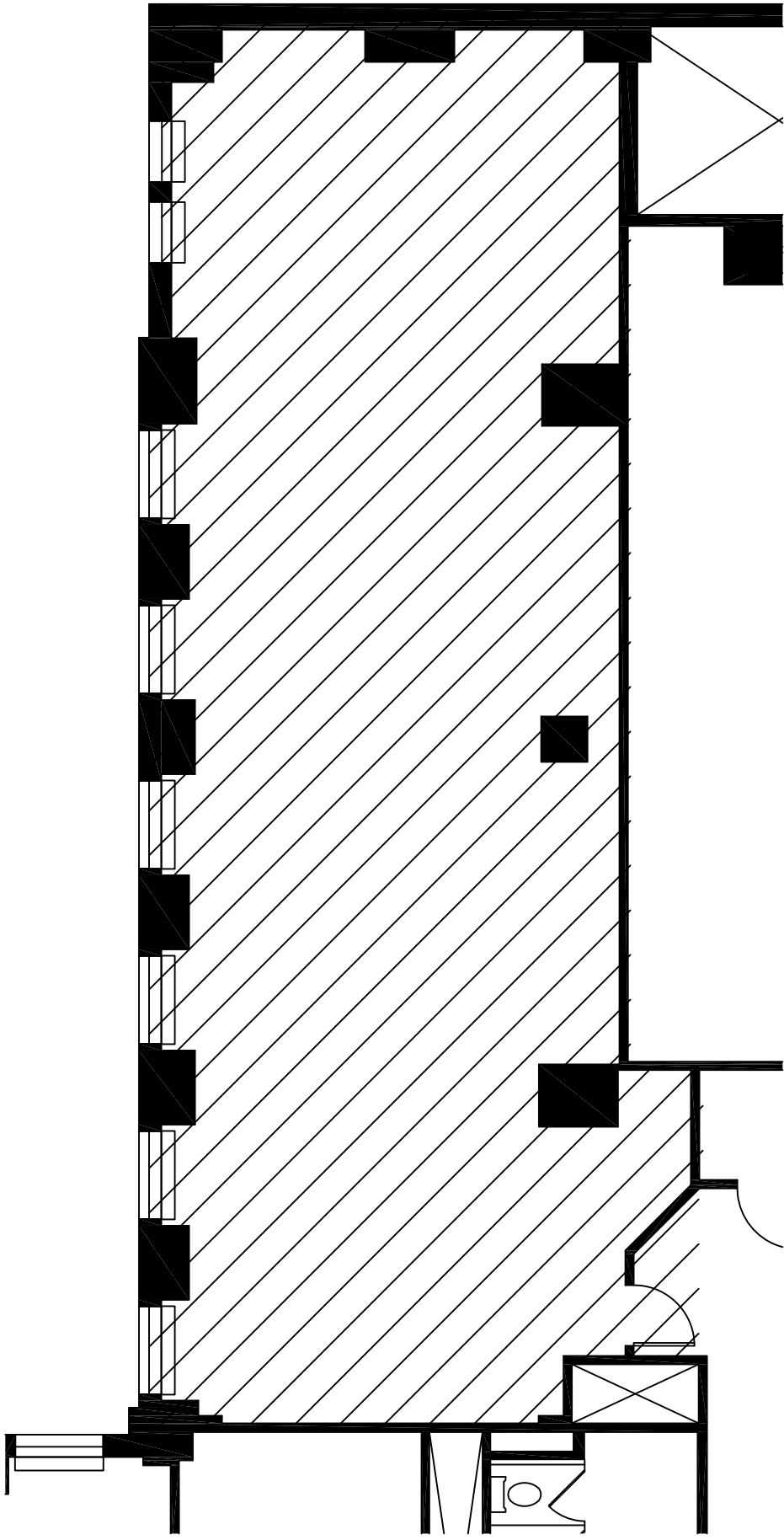
Drawn By: jkt

Checked By:

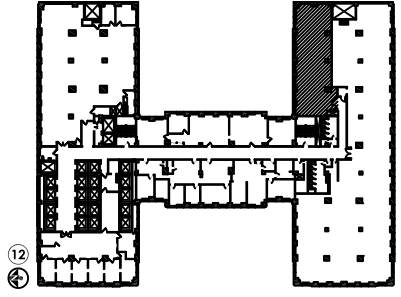
Drawing Number:

## RC-1140

Copyright © 2008 Tackett and Company, Inc.



1 PLAN  
SCALE: 1/8" = 1'-0"



2 KEY PLAN



123 SOUTH BROAD STREET 8th Floor  
PHILADELPHIA PA 19102  
C: 215-219-5155 F: 215-893-1466  
klaveland@sshco.com

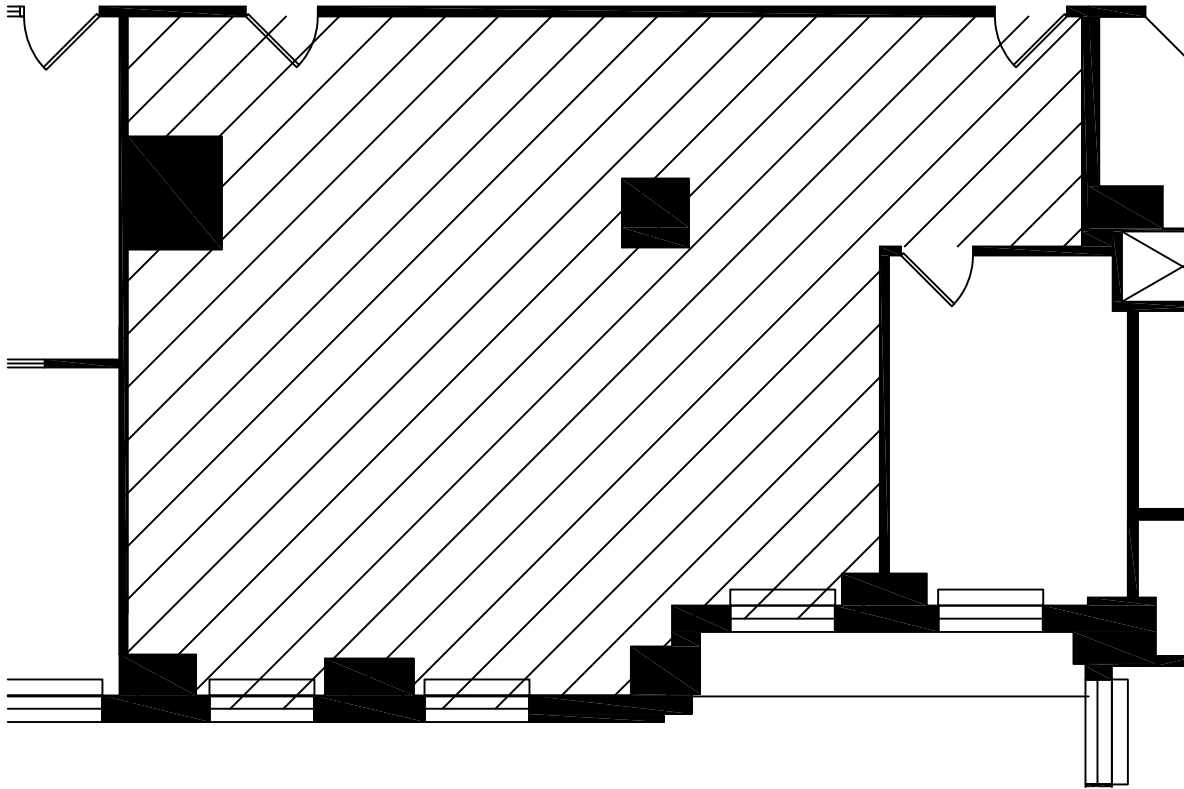
Project:  
**123 South Broad St.**  
**Suite 1255**  
Philadelphia, PA

Drawing Title:  
**Record Conditions Plan**

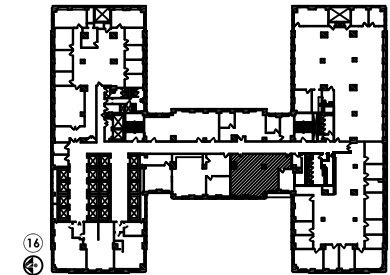
Date:	9-16-09
Revision Issue:	--
Drawn By:	KLP

Drawing Number:

**RC-1255**



1 PLAN  
SCALE: 1/8" = 1'-0"



2 KEY PLAN



Project:  
**123 South Broad Street  
Suite 1635**

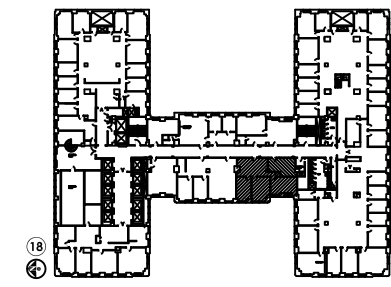
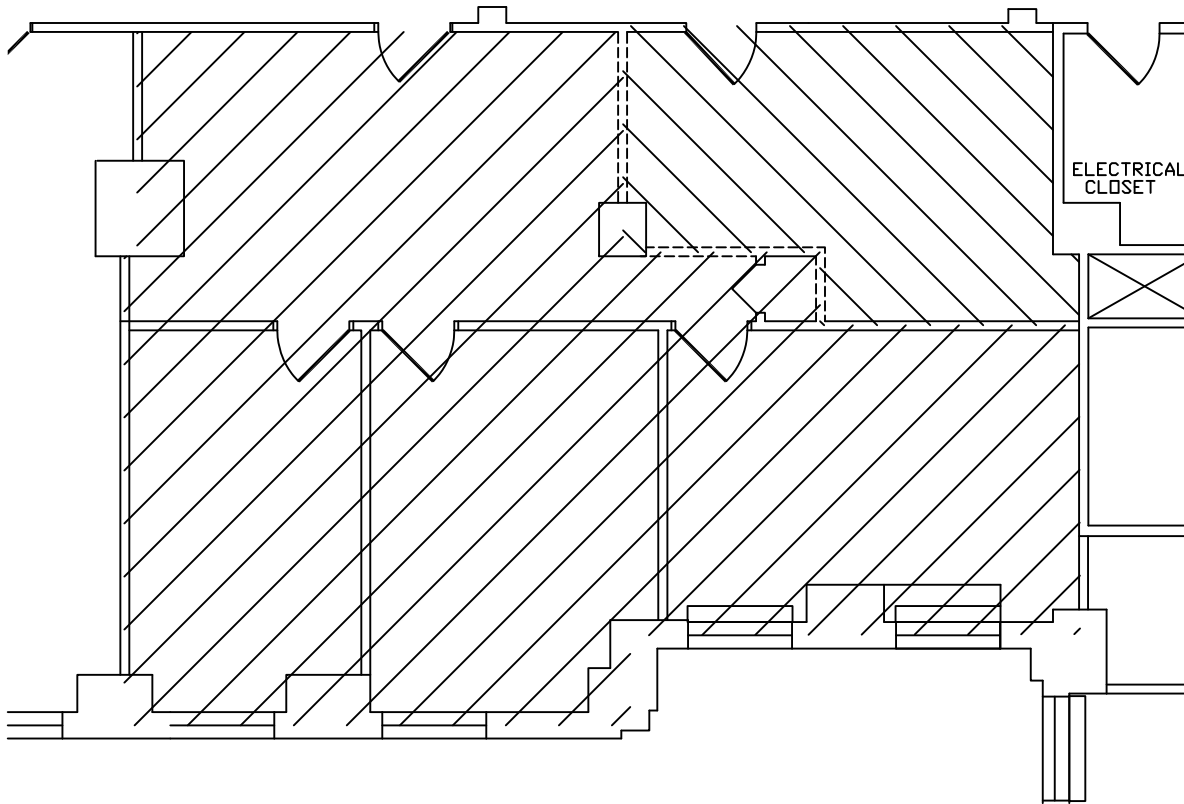
Drawing Title:  
**Record Conditions Plan**

Date: 9-16-09  
Revision Issue.: --  
Drawn By: KLP  
Drawing Number:

123 SOUTH BROAD STREET 8th Floor  
PHILADELPHIA, PA 19102  
C: 215-219-5155 F: 215-893-1466  
kloveland@sshco.com

Philadelphia, PA

**RC-1635**



1 PLAN  
SCALE: 1/8" = 1'-0"

2 KEY PLAN



Project:  
**123 South Broad Street  
Suite 1835**

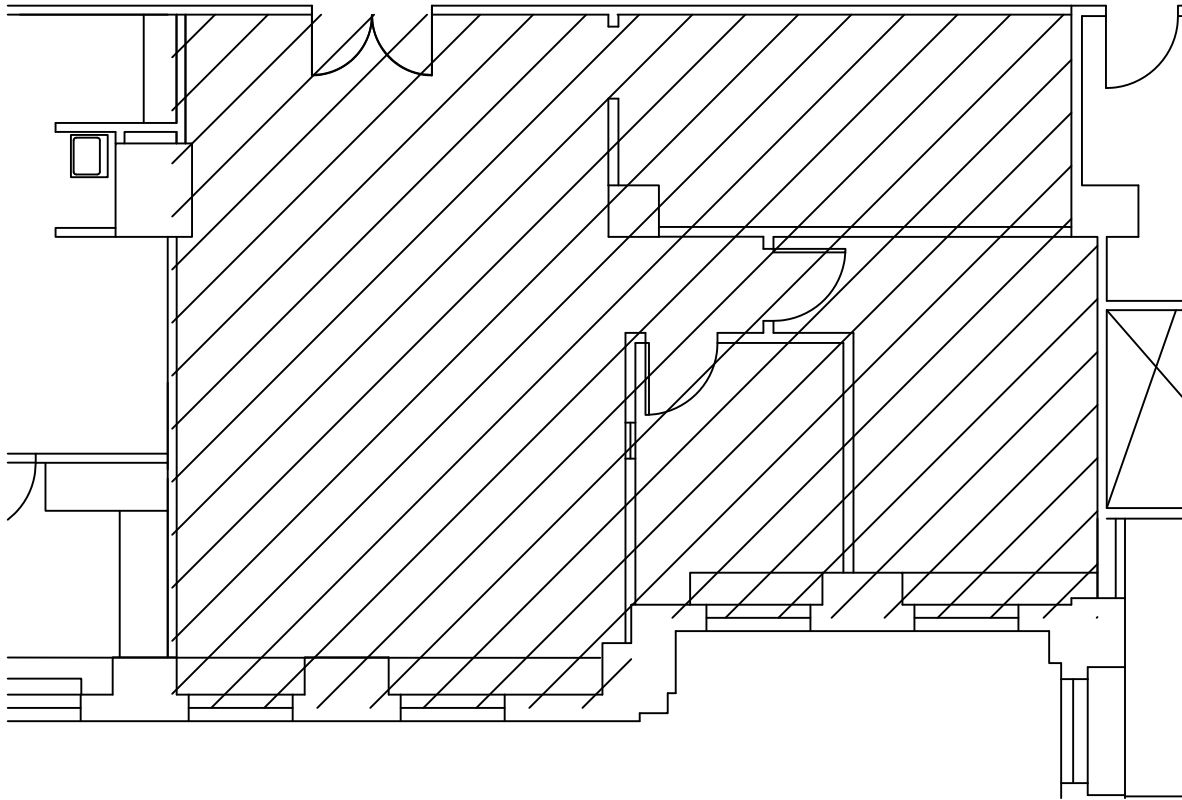
Drawing Title:  
**Record Conditions Plan**

Date: 9-16-09  
Revision Issue.: --  
Drawn By: KLP  
Drawing Number:

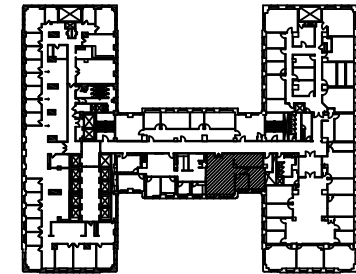
123 SOUTH BROAD STREET 8th Floor  
PHILADELPHIA, PA 19102  
C: 215-219-5155 F: 215-893-1466  
kloveland@sshco.com

Philadelphia, PA

**RC-1835**



1 PLAN  
SCALE: 1/8" = 1'-0"



2 KEY PLAN



Project:  
**123 South Broad Street  
Suite 2135**

Philadelphia, PA

Drawing Title:  
**Record Conditions Plan**

Date: 9-16-09

Revision Issue.: --

Drawn By: KLP

Drawing Number:

**RC-2135**

123 SOUTH BROAD STREET 8th Floor  
PHILADELPHIA, PA 19102  
C: 215-219-5155 F: 215-893-1466  
koveland@sshco.com